

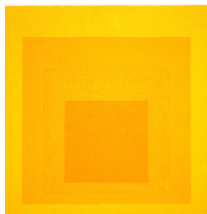
FISHER LANDAU CENTER FOR ART
FIVE DECADES OF PASSION PART ONE: THE EYE OF THE COLLECTOR, 1968-1988
January 4, 2009 - March 31, 2009



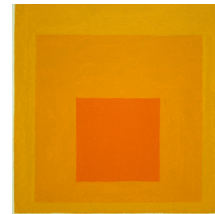
Eduardo Paolozzi
Jull, 1967.
Chromed steel,
2 1/2 x 12 1/2 x 8 inches.



Eduardo Paolozzi
Kyma, 1967.
Chromed steel,
4 1/2 x 12 1/2 x 8 inches.



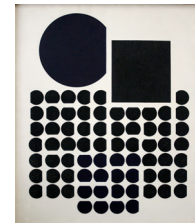
Josef Albers
Homage to the Square: Full Warmth, 1967.
Oil on masonite,
18 x 18 inches.



Josef Albers
Homage to the Square: Sel: E.B. 8, 1964.
Oil on masonite,
16 x 16 inches.



Louise Nevelson
Large Cryptic I, 1970.
Black-painted wood,
7 x 20 x 10 3/4 inches.



Victor Vasarely
Bellatrix, 1957.
Oil on canvas,
48 x 40 inches.

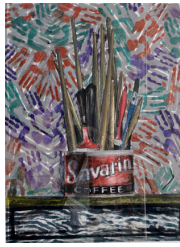


Robert Rauschenberg
Vitamin, 1960/68.
Oil paint and mixed media on canvas,
60 x 54 x 7 inches.



Lucas Samaras
Box #46, April 1966.
Wood, paper, and wool yarn,
12 x 12 1/4 x 12 14 inches.

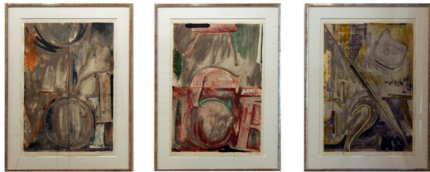
FISHER LANDAU CENTER FOR ART
FIVE DECADES OF PASSION PART ONE: THE EYE OF THE COLLECTOR, 1968-1988
January 4, 2009 - March 31, 2009



Jasper Johns
Savarin, 1982.
Lithographic monotype,
edition number: 2/2, 50 x 38 inches.



Kenneth Price
1914, 1983.
Fired clay and acrylic paint,
16 1/2 x 7 1/2 x 8 inches.



Jasper Johns
Voice 2, 1982.
Color lithograph on three sheets,
edition number: 17/54, each 35 3/4 x 24 1/4 inches.



Georgia O'Keeffe
Ladder to the Moon, 1958.
Oil on canvas,
40 x 30 inches.



Susan Rothenberg
Double Bones, 1979.
Acrylic and gesso on canvas,
39 1/4 x 37 inches.



Lucas Samaras
Stiff Box #14, 1971.
Cor-ten steel,
51 x 42 1/2 x 12 inches.



Thomas Nozkowski
Untitled, 1983.
Oil on linen,
22 1/8 x 30 1/8 inches.



William Baziotis
Chinese Dog, 1953.
Oil on canvas,
32 1/4 x 45 inches.

FISHER LANDAU CENTER FOR ART
FIVE DECADES OF PASSION PART ONE: THE EYE OF THE COLLECTOR, 1968-1988
January 4, 2009 - March 31, 2009



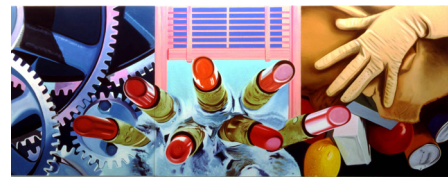
Andy Warhol
Portrait of Emily Fisher Landau, 1982.
Synthetic polymer paint, silkscreen ink on canvas,
40 x 40 inches.



Andy Warhol
Portrait of Emily Landau, 1984.
Acrylic and silkscreen on canvas,
40 x 40 inches.



Bryan Hunt
Vela, 1979.
Copper foil on silk paper over spruce,
7 1/2 x 5 1/4 x 41 1/2 inches.



James Rosenquist
House of Fire II, 1982.
Oil on canvas, three panels,
78 x 198 inches.



Rodney White
#2, 1985.
Dry pigment and charcoal on canvas,
28 x 112 7/8 inches.



Mark Innerst
A Storm As It Passes Between Relay Stations, 1983.
Oil on board with wood frame,
10 3/8 x 31 3/4 inches.



Alexander Calder
Untitled (standing mobile), circa 1959.
Painted metal and brass rod,
21 3/4 x 24 1/2 inches.

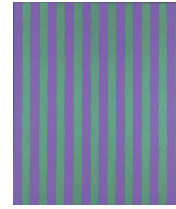


Donald Judd
Desk Set, 1985.
Solid black walnut with clear matte finish,
30 x 48 x 33 inches; chairs 30 x 15 x 15 inches.

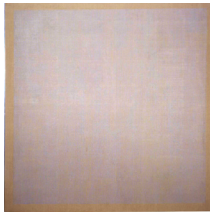
FISHER LANDAU CENTER FOR ART
FIVE DECADES OF PASSION PART ONE: THE EYE OF THE COLLECTOR, 1968-1988
January 4, 2009 - March 31, 2009



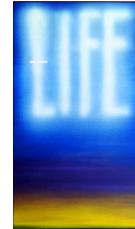
Sherrie Levine
Thin Stripe #6, 1986.
Casein and wax on mahogany,
24 x 20 inches.



Sherrie Levine
Thin Stripe #2, 1985.
Casein and wax on mahogany,
24 x 20 inches.



Agnes Martin
Grey Stone II, 1961.
Oil, gold leaf and pencil on linen,
74 3/4 x 73 3/4 inches.



Edward Ruscha
Life, 1984.
Oil and enamel on canvas,
83 7/8 x 48 inches.



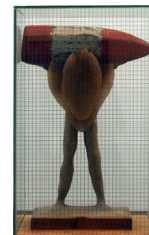
Cy Twombly
Untitled, 1964/84.
Oil, graphite and crayon on canvas,
80 3/8 x 98 1/4 inches.



April Gornik
The Equinox, 1987.
Oil on linen,
74 x 103 1/8 inches.



Tom Otterness
Frog and Robot, 1985.
Cast bronze with black patina,
edition number: 1/3, 34 1/2 x 41 x 41 inches.

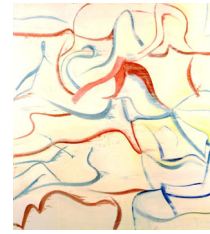


Garnett Puett
Buoyhive, 1987.
Beeswax, steel, wood and glass,
28 1/2 x 19 x 12 inches.

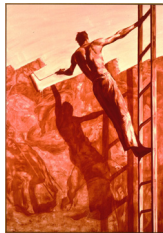
FISHER LANDAU CENTER FOR ART
FIVE DECADES OF PASSION PART ONE: THE EYE OF THE COLLECTOR, 1968-1988
January 4, 2009 - March 31, 2009



Andy Warhol
Self-Portrait, 1986.
Acrylic and silkscreen on canvas,
80 x 80 inches.



Willem de Kooning
Untitled XV, 1983.
Oil on canvas,
80 x 70 inches.



Mark Tansey
Triumph over Mastery II, 1987.
Oil on canvas,
97 1/4 x 68 1/4 inches.



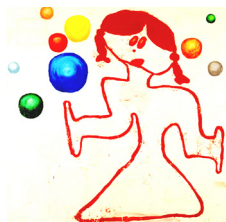
Chris MacDonald
Untitled #II, 1988.
Wood,
32 x 28 3/4 x 43 inches.



Daisy Youngblood
Romana, 1987/88.
Cast bronze,
edition number: 1/3, 21 x 8 1/4 x 10 inches.



Neil Jenney
Threat and Sanctuary, 1969.
Oil on canvas, with wood frame,
62 x 123 inches.



Donald Baechler
Painting with Balls, 1986/87.
Acrylic and collage on canvas,
88 x 88 inches.

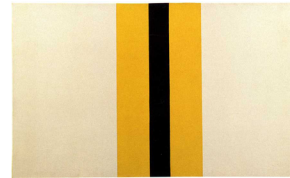


Richard Artschwager
Pyramid/Table/Window/Mirror/Door/Rug/Basket, 1979. Acrylic on
plywood,
87 1/2 x 34 x 34 inches.

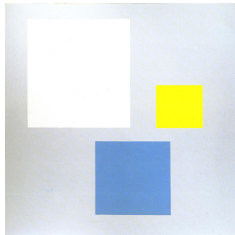
FISHER LANDAU CENTER FOR ART
FIVE DECADES OF PASSION PART ONE: THE EYE OF THE COLLECTOR, 1968-1988
January 4, 2009 - March 31, 2009



Nancy Dwyer
The Desk of Envy, 1988.
Mahogany, leather, glass, brass fixtures,
29 x 84 x 23 1/2 inches.



John McLaughlin
A – 1960, 1960.
Oil on canvas,
32 x 52 inches



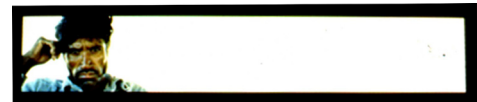
Burgoyne Diller
First Theme, 1958/60.
Oil on canvas,
50 1/4 x 50 1/8 inches.



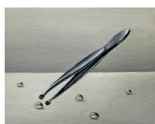
Al Taylor
Untitled, 1988.
Brass, wood and paint,
94 x 62 x 30 inches.



Forrest Bess
Untitled (The Crown), 1949.
Oil on canvas,
8 x 10 inches.



Alfredo Jaar
Coyote! (A), 1988.
Transparency in light box,
18 1/2 x 96 1/2 x 6 3/4 inches.



Fanny Brennan
Tweezer, 1987.
Oil on gesso panel,
1 13/16 x 2 3/8 inches.



Robert Helm
Earth Diver, 1988.
Oil on wood, wood inlay,
39 1/4 x 67 inches.