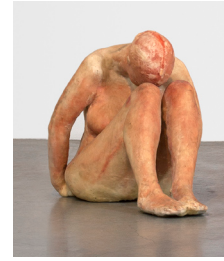


FISHER LANDAU CENTER FOR ART
VISUAL CONVERSATIONS

Second Floor



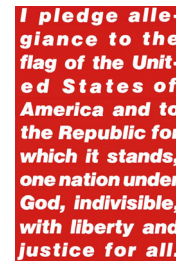
Nan Goldin, *Self-portrait with milagro, the Lodge, Belmont, MA*, 1988.
Cibachrome, 30 x 24 inches.



Kiki Smith, *Untitled (The Sitter)*, 1992.
Wax, cheesecloth, wood and dye,
28 x 24 x 36 inches.



Edward Ruscha, *Plenty Big Hotel Room (Painting for the American Indian)*, 1985.
Oil on canvas, 84 x 60 inches.



Barbara Kruger, *Untitled (Pledge)*, 1988.
Photographic silkscreen on vinyl,
124 x 80 inches.



Annette Lemieux, *Black Mass*, 1991.
Latex, acrylic medium, gesso, oil on canvas,
96 x 105 inches.



Neil Jenney, *North America Divided*, 1991/92.
Oil on wood,
25 1/2 x 113 x 3 inches.



Shirin Neshat, *Fervor (Couple at Intersection)*,
2000. Triptych - three gelatin silver prints,
49 1/4 x 60 inches.



Mark Tansey, *Valley of Doubt*, 1990.
Oil on canvas,
87 1/2 x 144 inches.

FISHER LANDAU CENTER FOR ART
VISUAL CONVERSATIONS

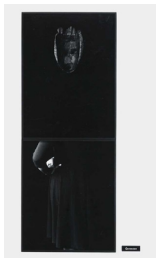
Second Floor



Mark Tansey, *Study for Mont Sainte-Victoire*, 1987. Oil on canvas, 26 x 40 inches.



Matthew Barney, *CREMASTER 2: The Lost Tribes of Israel*, 1999. Thirteen C-prints in acrylic frames, 29 x 25 inches each.



Lorna Simpson, *Queensize*, 1991. 2 gelatin silver prints, plastic plaque, 102 x 51 inches.



Andres Serrano, *Klanswoman (Grand Klaliff II)*, 1990. Cibachrome, silicone, Plexiglas, wood, 60 x 49 1/2 inches.



Richard Artschwager, *Cerise*, 2002. Photographs mounted on wood, acrylic, 56 x 24 x 28 1/2 inches.



Adam Fuss, *Untitled (Portrait of Cole Fisher)*, 2000. Unique Cibachrome photogram, 45 3/4 x 36 inches.



Edward Mapplethorpe, *Michael Anthony Fisher*, 2011. Gelatin silver print, 60 x 50 inches.



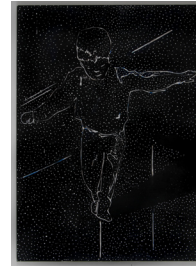
Ford Beckman, *Clown with Hat on White*, 1991. Silkscreen, acrylic, latex, enamel, industrial varnish on paper with wood frame, 97 x 76 3/4 inches.

FISHER LANDAU CENTER FOR ART
VISUAL CONVERSATIONS

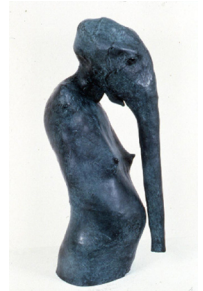
Second Floor



Donald Baechler, *Arithmetic*, 1990.
Acrylic, oil, fabric collage on linen,
100 x 80 inches.



James Meyer, *Jungian Balance*, 2008.
Encaustic on linen,
84 x 60 inches.



Daisy Youngblood, *Romana*, 1987/88.
Cast bronze,
21 x 8 1/4 x 10 inches.



Tom Otterness, *Frog and Robot*, 1985.
Cast bronze with black patina,
34 1/2 x 41 x 41 inches.



Mark Tansey, *The Bricoleur's Daughter*, 1987.
Oil on canvas, 68 x 67 inches.



Neil Jenney, *Obstinance and Disapproval*, 1969.
Oil on canvas, with wood frame,
60 1/8 x 71 1/8 inches.



Susan Derges *The River Taw*, 3 February 1997,
1997. Unique dye-destruction photogram,
67 x 24 inches.



Susan Derges, *The River Taw*, 21 January 1998,
1998. Unique gelatin-silver photogram,
66 x 24 inches.

FISHER LANDAU CENTER FOR ART
VISUAL CONVERSATIONS

Second Floor



Lynn Davis, *Iceberg #36, Disko Bay, Greenland,*
2000, 2000. Gold-toned gelatin silver print,
54 1/2 x 54 1/2 inches.



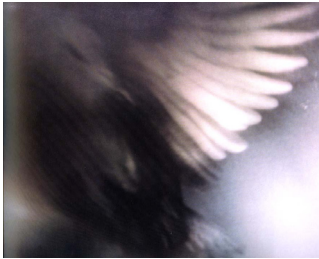
Lynn Davis, *Iceberg XXVIII, Disko Bay,*
Greenland, 2007, 2007, Gold-toned gelatin
silverprint, 57 3/8 x 57 3/8 inches.



Lynn Davis, *Three Gorges, Yangtze River, China,*
2001, 2001. Gold-toned gelatin silver print,
58 1/2 x 57 1/2 inches.



Barbara Ess, *Untitled,* 1989.
Monochrome color print,
50 x 96 inches.



Barbara Ess, *Untitled,* 1991.
Monochrome color print,
40 x 30 inches.