

**LEGACY: Photographs from Emily Fisher Landau's Gift
to the Whitney Museum of American Art**

THIRD FLOOR



John Dugdale

*Farmhouse Inverted in Venini Vase,
Stone Ridge, NY, 1994, 1994.*
Hand-coated Cyanotype, 14 x 11 inches.



Abelardo Morell

*Camera Obscura Image of Windows in Gallery with Two
Paintings, Whitney Museum, 2003, 2003.*
Gelatin silver print, 48 x 60 inches.



Matthew Barney

*CREMASTER 3: 1967 Chrysler
Imperial, 2002.* C-print
in acrylic frame, 44 x 54 inches.



Keith Cottingham

Untitled (front view), 2004.
Digital chromogenic
print, 66 3/4 x 48 inches.



Victoria Sambunaris

*Untitled, Bingham Canyon
Copper Mine (Utah), 2002.*
C-print, 39 x 55 inches.



Lynn Davis

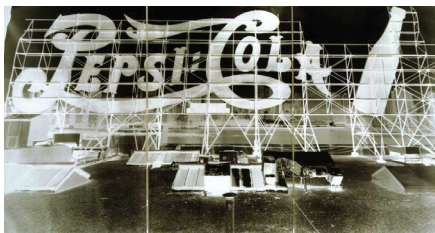
Iceberg #36, Disko Bay, Greenland, 2000, 2000.
Gold-toned gelatin silver print, 54 1/4 x 54 1/4" framed



Rodney Graham

Oak Tree, Wroxtton Heath II, 1990.
Chromogenic print, 90 3/8 x 71 3/8 inches.

Whitney Museum of American Art, New York. Gift from the Emily Fisher Landau Collection. 2011.155



Vera Lutter

*Pepsi Cola, Long Island City, VIII,
June 24, 1998, 1998.*
Unique gelatin silver print 90 x 168 inches.



Nan Goldin

Honda brothers in cherry blossom storm, Tokyo, 1994.
Silver dye bleach print (ilfochrome), 30 x 28 5/8 inches.

Whitney Museum of American Art, New York. Gift of the artist and Matthew Marks Gallery. 2001.243

**LEGACY: Photographs from Emily Fisher Landau's Gift
to the Whitney Museum of American Art**

THIRD FLOOR



Robert Longo

Men in the Cities Series: Untitled (James), 1980-98.
Cibachrome print, 43 1/4 x 31 inches.



Hiroshi Sugimoto

The Royal Family, 1994.
Gelatin silver print, 18 x 22 inches.



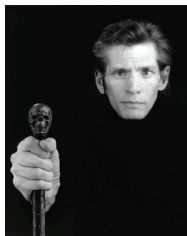
Shirin Neshat

Tooba Series, 2002.
Cibachrome print 61 1/2 x 48 inches (each).



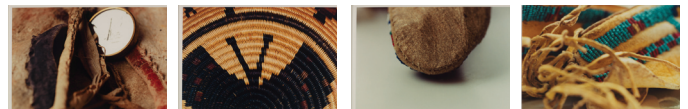
Philip-Lorca DiCorcia

Head #1, 2000
Fujicolor print on Plexiglas, 48 x 60 inches.



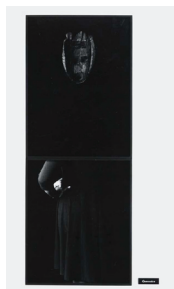
Robert Mapplethorpe

Self-Portrait with a Skullcane, 1988.
Gelatin silver print, 24 x 20 inches.



Kiki Smith

Untitled, 2000-01
C-print, 16 x 20 inches (each).



Lorna Simpson

Queensize, 1991.
Gelatin silver prints, plastic plaque, 102 x 51 inches.



Richard Artschwager

Cerise, 2002.
Photographs mounted on wood, 56 x 24 x 28 inches.