

**LEGACY: Photographs from Emily Fisher Landau's Gift
to the Whitney Museum of American Art**

SECOND FLOOR



Kiki Smith

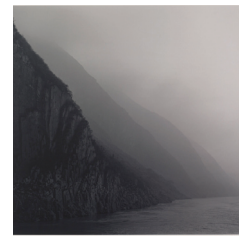
Untitled, 2000-01

C-print, 26 13/16 x 39 7/8 inches.



Lynn Davis

Bent Pyramid, Dashur, Cairo, Egypt, 1997, 1997
Gold-toned gelatin silver print, 40 x 40 inches.



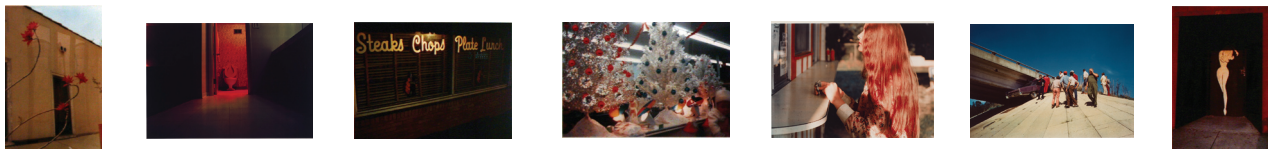
Lynn Davis

Three Gorges, Yangtze River, China, 2001, 2001
Gold-toned gelatin silver print, 58 x 57 inches.



Edward Ruscha

From the series *26 Gasoline Stations, 1989 (1962)*
Gelatin silver prints, various dimensions.



William Eggleston

From the *Seventies: Volume Two (Untitled)*, c. 1970
Dye-transfer prints, various dimensions.

**LEGACY: Photographs from Emily Fisher Landau's Gift
to the Whitney Museum of American Art**

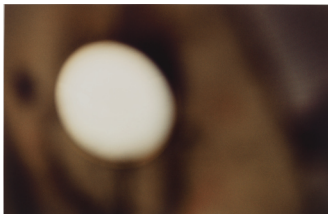
SECOND FLOOR



Barbara Ess

Untitled, 1988.

Monochrome color, 50 x 68 inches.



Kiki Smith,

Untitled, 2000-01

C-print, 20 x 30 inches (each).



Yinka Shonibare

Dorian Gray, 2001

Resin prints, digital lambda print, 130 x 175 inches.



Barbara Ess

Untitled, 1989.

Monochrome color, 73 x 50 inches.



Gregory Crewdson

Untitled (bedroom tree), 2001-2002

Digital C-print 48 x 60 inches.



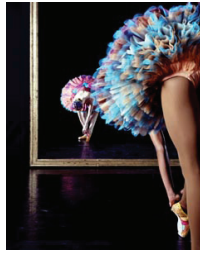
Yinka Shonibare

Un Ballo in Maschera (I-X), 2004-05

Giclee prints, 34 1/2 x 24 1/2 inches (each).

**LEGACY: Photographs from Emily Fisher Landau's Gift
to the Whitney Museum of American Art**

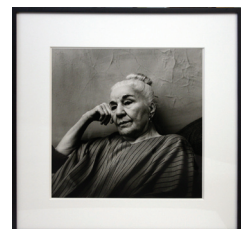
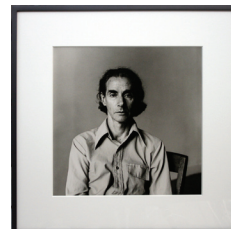
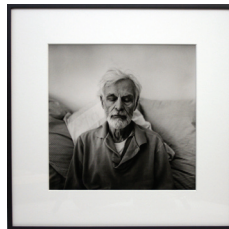
SECOND FLOOR



Yinka Shonibare, MBE
Odile and Odette I, 2005-06,
C-type print, 49 x 63 1/2 inches.



Peter Hujar
Columbia Service Station; West Side Parking Lots; No Parking, NYC, 1976,
Gelatin silver print, 14 5/8 x 14 5/8 inches (each).



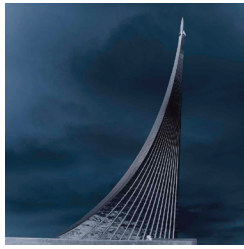
Peter Hujar
Portrait of Robert Wilson; Ann Wilson; Edwin Denby; James Waring; May Wilson, 1975,
Vintage silver prints, 14 3/4 x 14 3/4 inches.



Robert Longo
Men in the Cities Series: Untitled (Gretchen); (Barsness); (Janet), 1980-98,
Cibachrome prints, 43 1/4 x 31 inches (each).

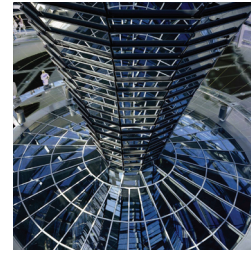
**LEGACY: Photographs from Emily Fisher Landau's Gift
to the Whitney Museum of American Art**

SECOND FLOOR



Lynn Davis

*Monument to the Conquerors of Space of the VDNKh
(1964), Exhibition Center, Moscow, Russia, 2003, 2003.
Piezo print, 40 x 40 inches.*



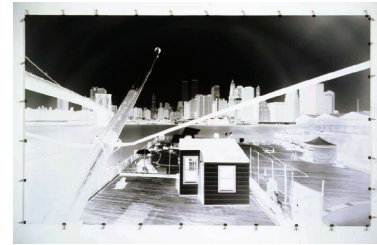
Lynn Davis

*Reichstag Building, Elliptical Glass Dome, Berlin,
Germany (Architect: Sir Norman Foster, 1999), 2003.
Piezo print, 40 x 40 inches.*



Abelardo Morell

*Camera Obscura Image of Boston's Old Customs House
in Hotel Room, 1999, 1999.
Gelatin silver print, 32 x 40 inches.*



Vera Lutter

*The Appropriation of Manhattan, Fire Boat House,
Fulton Ferry Landing, Brooklyn, New York, May 20,
1996, 1996. Gelatin silver print, 54 x 90 inches.*