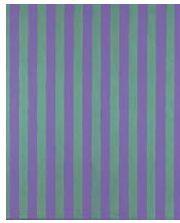


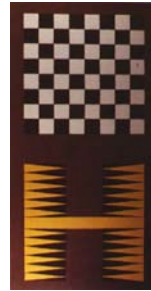
# INTUITIVE PROGRESSION



**Sherrie Levine**, *Thin Stripe #6*, 1986.  
Casein and wax on mahogany,  
24 x 20 inches.



**Sherrie Levine**, *Thin Stripe #2*, 1985.  
Casein and wax on mahogany,  
24 x 20 inches.



**Sherrie Levine**, *Untitled*, 1988.  
Casein on lead,  
40 x 20 inches.



**Sherrie Levine**, *Untitled*, 1988.  
Casein on lead,  
40 x 20 inches.



**Agnes Martin**, *Untitled*, 1960, 1965, 1964, 1964.  
Black ink on paper,  
8 1/2 x 8 1/2 inches (each).



**Agnes Martin**, *Grey Stone II*, 1961.  
Oil, gold leaf & pencil on linen,  
74 3/4 x 73 3/4 inches.



**Terry Winters**, *Tessellation Figures*,  
2011. Oil on linen,  
80 x 76 inches.



**Terry Winters**, *Morula I*, 1983.  
2 color lithograph,  
41 3/4 x 31 5/8 inches.



**Terry Winters**, *Morula III*, 1983/4.  
3 color lithograph,  
42 x 32 1/2 inches.



**Terry Winters**, *Untitled*, 1983.  
Oil on linen,  
30 x 22 inches.



**Joseph Amar**, *Lillian, Miriam, Hannah, Anne, Farah*, 1990.  
Oil on linen,  
30 x 30 inches (each).

# INTUITIVE PROGRESSION



**John McLaughlin**, *Untitled*, c.1970/74.  
Collage of paper and tape,  
14 7/8 x 12 inches.



**John McLaughlin**, *#2*, 1966.  
Oil and acrylic on canvas,  
48 x 60 inches.



**John McLaughlin**, *Untitled*, c.1970/74.  
Collage of paper and tape,  
12 x 15 inches.



**Richard Artschwager**, *Book*, 1987.  
Formica on wood,  
5 1/6 x 21 1/8 x 12 1/6 inches.



**Richard Artschwager**, *Diderot's Last Resort*, 1992.  
Formica on wood,  
54 1/2 x 54 x 43 inches.



**Jasper Johns**, *Painting with Two Balls*, 1971.  
Screenprints (progressive),  
37 1/4 x 30 3/4 inches (each).



**Jasper Johns**, *Painting with Two Balls (Grays)*, 1971.  
Screenprints (progressive),  
35 x 28 1/8 inches (each).

# INTUITIVE PROGRESSION



**Thomas Nozkowski**, Untitled, 1989.  
Oil on canvas board,  
16 x 20 inches.



**Thomas Nozkowski**, Untitled, 1988.  
Oil on canvas board,  
16 x 20 inches.



**Thomas Nozkowski**, Untitled, 1981/3.  
Oil on canvas board,  
16 x 20 inches.



**Thomas Nozkowski**, Untitled, 1979.  
Oil on canvas board,  
16 x 20 inches.



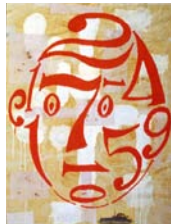
**Susan Rothenberg**, *Mezzo Fist #2*, 1990.  
Mezzotint with collage,  
24 x 19 1/2 inches.



**Susan Rothenberg**, *Double Bones*, 1979.  
Acrylic and gesso on canvas,  
39 1/4 x 37 inches.



**Susan Rothenberg**, *Mezzo Fist #1*, 1990.  
Mezzotint with collage,  
31 x 22 1/2 inches.



**Donald Baechler**, *Composition with Arithmetic*, 1990.  
Ink, gesso, flashe, coffee, pencil, and collage on paper,  
51 1/2 x 40 inches.



**Donald Baechler**, *Arithmetic*, 1990.  
Acrylic, oil, fabric collage on linen,  
100 x 80 inches.

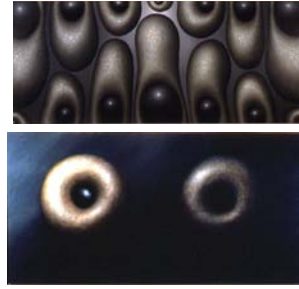
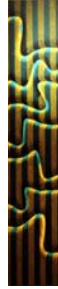
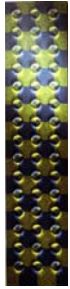


**Kiki Smith**, *Banshee Pearls*, 1991.  
Twelve: 4 color lithographs,  
22 1/2 x 30 1/2 inches (each).



**Kiki Smith**, Untitled a.k.a. *The Sitter*, 1992.  
Wax, cheesecloth, wood and dye,  
28 x 24 x 36 inches.

# INTUITIVE PROGRESSION



**Peter Schuyff**, *Untitled*, 1991. **Peter Schuyff**, *Untitled*, 1991. **Peter Schuyff**, *Untitled*, 1991.  
Oil on canvas, 114 x 24 inches. Oil on canvas, 114 x 24 inches. Oil on canvas, 114 x 24 inches.

**Karla Knight**, *Half and Hole (Ascendant)*, 1989. Oil on linen, 41 x 95 inches.

**Karla Knight**, *Full and Hole*, 1987. Oil on linen, 50 x 100 inches.



**James Meyer**, *Lunar Year*, 1993. Oil on canvases, 90 x 80 inches.



**James Meyer**, *Clairvoyant*, 1990. Watercolor, ink & gesso on paper, 37 1/2 x 25 1/8 inches.



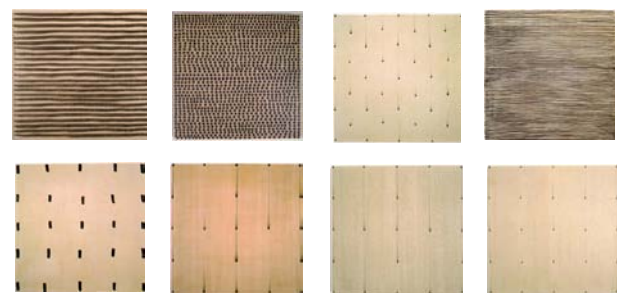
**James Brown**, *Hats*, 1982. Oil on paper, 50 x 38 inches.



**James Brown**, *Brown Elegua*, 1982. Enamel, pastel and graphite on canvas, 96 x 66 inches.



**Carl Andre**, *28 Lead Rectangle*, 1968. 28 lead squares, 63 1/8 x 111 x 3/8 inches.

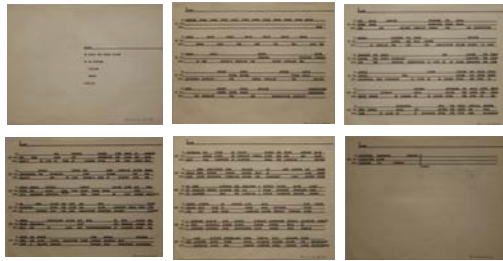


**Gloria Graham**, *Untitled #6, #46, #37, #38, #40, #47, #32, #56*, 1989. Watercolor and kaolin on canvas, 14 x 14 inches (each).

# INTUITIVE PROGRESSION



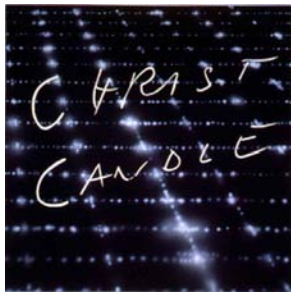
**Carl Andre**, *aaaaaaaaabbbbbbbbbbccccccccddddddddd*, *Thirteen Visageless Monosyllables from Swinburne*, *days mind case code dust case time guns dock*, *GAZETTEER*, *ESSAYONSCULPTUREFORECGOSEN*, 1964.  
 Typed carbon poems on paper, 8 1/2 x 11 inches (each).



**Carl Andre**, *Flags/An Opera for Three Voices/ To de Kooning/Pollack/Gorky*, 1964. Typed carbon poem on six sheets of paper, 8 3/8 x 10 7/8 inches (each).



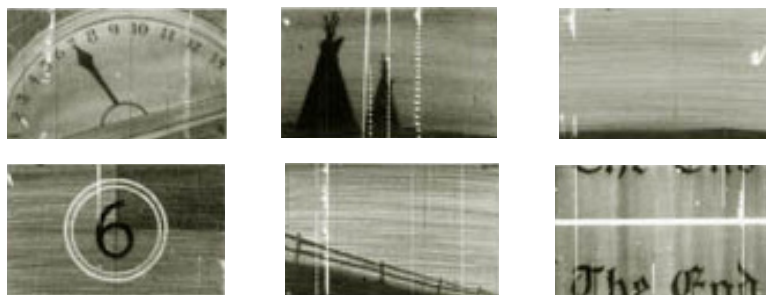
**Ricci Albenda**, *Diptych*, 2005.  
 Acrylic on wood panel, 47 x 85 inches.



**Edward Ruscha**, *Christ Candle*, 1987.  
 Acrylic on canvas, 72 x 72 inches.



**Ricci Albenda**, *psycho!*, 2004.  
 Acrylic on wood panel, 18 x 24 inches.



**Edward Ruscha**, *Cameo Cuts*, 1992.  
 Six: 2 color lithographs, 12 x 12 inches (each).