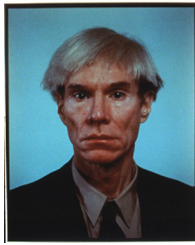
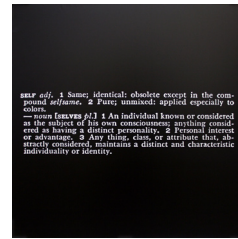


FISHER LANDAU CENTER FOR ART

WE ARE THE WORLD: Figures & Portraits



Neil Winokur,
Portrait of Andy Warhol, 1982,
Cibachrome print, edition of 25,
20 x 16 inches.



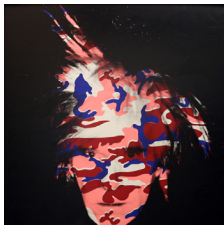
Joseph Kosuth
Titled (Art as Idea as Idea), [self], 1967,
Photostat with documentation,
48 x 48 inches.



Andy Warhol
Portrait of Emily Landau, 1984,
Acrylic and silkscreen on canvas,
40 x 40 inches.



Nan Goldin
Self-portrait with milagro, the Lodge, Belmont, MA, 1988,
Cibachrome, edition number 6/25,
30 x 24 inches.



Andy Warhol
Self-Portrait, 1986,
Acrylic and silkscreen on canvas,
80 x 80 inches.



Robert Mapplethorpe
Michael, 1987,
Platinum on linen, canvas with silk,
29 1/2 x 50 inches.



Chuck Close
Untitled (portrait of Hillary Rodham Clinton), 2000,
Digital inkjet print, edition number 10/10,
47 x 35 inches.



Kiki Smith
Untitled II, 2006,
Monotype hand-colored lithograph with watercolor, stencil,
pressed leaves and gouache,
81 1/2 x 46 inches.

FISHER LANDAU CENTER FOR ART

WE ARE THE WORLD: Figures & Portraits



Gary Hume
The Outsider, 2005,
Enamel on bronze,
72 x 35 x 35 inches.



Win Knowlton
Untitled (head), 1992,
Bronze, unique,
27 x 15 x 17 1/2 inches.



Inez van Lamsweerde
Kirsten, 1996,
C-print mounted to Plexiglas,
19 5/8 x 19 5/8 inches.



Andy Warhol
Emily Fisher Landau, 1982,
Synthetic polymer paint, silkscreen ink on canvas,
40 x 40 inches.



Andy Warhol
Marilyn Monroe, 1980,
Graphite on paper,
31 1/2 x 23 1/2 inches.



Herb Ritts
Francesco Clemente, New York, 1994,
Gelatin silver print,
24 x 20 inches.



Inez van Lamsweerde and Vinoodh Matadin
Bjork (Poisson-Nageur), 2000,
C-print on Plexiglas, edition number 1/6,
50 x 62 inches.



Matthew Barney
DRAWING RESTRAINT 9: Occidental Guest (male), 2005,
DRAWING RESTRAINT 9: Occidental Guest (bride), 2005,
Two C-prints in self-lubricating plastic frame, edition number 3/6,
53 x 43 x 1 1/2 inches each.

FISHER LANDAU CENTER FOR ART

WE ARE THE WORLD: Figures & Portraits



Carl Andre
Joseph and Louise, 1992,
Wood, galvanized metal with two brass pieces,
17 x 13 x 13 inches.



Max Vadukul
Untitled, 1997,
Gelatin silver print,
20 x 16 inches.



Annie Leibovitz
Jasper Johns and Leo Castelli, 1996,
Gelatin silver print, edition number 3/40,
16 x 20 inches.



Robert Mapplethorpe
Portrait of Emily Landau, 1987,
Gelatin silver print,
19 x 15 inches.



Saint Clair Cemin,
Homage to Sartre, 1989,
Bronze, steel, edition of 3,
46 1/2 x 46 1/2 x 31 inches.



Timothy Greenfield-Sanders
(see following page for details)



Tadanori Yokoo
Henry Miller Exhibition, 1968,
Silkscreen,
41 1/4 x 29 1/2 inches.



Michael Hurson
Portrait of Emily Landau, 1987,
Graphite, conte crayon, pastel, ink on paper,
36 x 18 inches.

FISHER LANDAU CENTER FOR ART

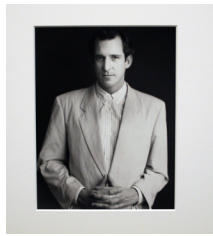
WE ARE THE WORLD: Figures & Portraits



Timothy Greenfield-Sanders
Ross Bleckner, 1986,
Gelatin silver contact print,
edition number 12/25,
20 x 16 inches.



Timothy Greenfield-Sanders
Lorna Simpson 1986,
Gelatin silver contact print,
edition number 2/10,
20 x 16 inches.



Timothy Greenfield-Sanders
James Brown, 1986,
Gelatin silver contact print,
edition number 12/25,
20 x 16 inches.



Timothy Greenfield-Sanders
Keith Haring, 1986,
Gelatin silver contact print,
edition number 3/10,
20 x 16 inches.



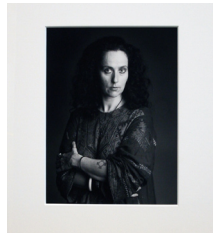
Timothy Greenfield-Sanders
Saint Clair Cemin, 1986,
Gelatin silver contact print,
edition number 3/10,
20 x 16 inches.



Timothy Greenfield-Sanders
Christopher Wool, 1986,
Gelatin silver contact print,
edition number 3/10,
20 x 16 inches.



Timothy Greenfield-Sanders
Terry Winters, 1986,
Gelatin silver contact print,
edition number 3/10,
20 x 16 inches.



Timothy Greenfield-Sanders
Kiki Smith 1986,
Gelatin silver contact print,
edition number 2/10,
20 x 16 inches.



Timothy Greenfield-Sanders
Donald Baechler, 1986,
Gelatin silver contact print,
edition number 3/10,
20 x 16 inches.



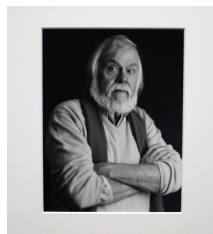
Timothy Greenfield-Sanders
Barbara Kruger, 1986,
Gelatin silver contact print,
edition number 2/10,
20 x 16 inches.



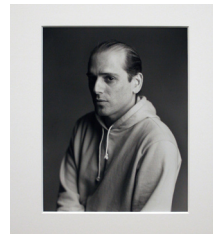
Timothy Greenfield-Sanders
David Wojnarowicz, 1986,
Gelatin silver contact print,
edition number 3/10,
20 x 16 inches.



Timothy Greenfield-Sanders
Annette Lemieux, 1986,
Gelatin silver contact print,
edition number 5/15,
20 x 16 inches.



Timothy Greenfield-Sanders
John Baldessari, 1986,
Gelatin silver contact print,
edition number 4/10,
20 x 16 inches.



Timothy Greenfield-Sanders
Robert Greene 1986,
Gelatin silver contact print,
edition number 3/10,
20 x 16 inches.



Timothy Greenfield-Sanders
James Rosenquist, 1986,
Gelatin silver contact print,
edition number 12/25,
20 x 16 inches.



Timothy Greenfield-Sanders
Edward Ruscha, 1986,
Gelatin silver contact print,
edition number 12/25,
20 x 16 inches.



Timothy Greenfield-Sanders
April Gornik, 1986,
Gelatin silver contact print,
edition number 2/10,
20 x 16 inches.



Timothy Greenfield-Sanders
Mark Innerst, 1986,
Gelatin silver contact print,
edition number 2/10,
20 x 16 inches.



Timothy Greenfield-Sanders
Eric Fischl, 1986,
Gelatin silver contact print,
edition number 2/10,
20 x 16 inches.



Timothy Greenfield-Sanders
Jenny Holzer, 1986,
Gelatin silver contact print,
edition number 5/10,
20 x 16 inches.

FISHER LANDAU CENTER FOR ART

WE ARE THE WORLD: Figures & Portraits



Robert Rauschenberg
Cy + Relics - Rome, 1952,
Gelatin silver print, edition number 27/50,
20 x 16 inches.



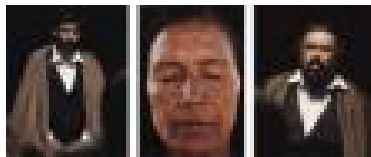
Bruce Weber
Cy Twombly, Rome, Italy, 1994/98,
Gelatin silver print, edition number 2/20,
11 x 14 inches.



Herb Ritts
Agnes Martin, New York, 1991,
Gelatin-silver print,
20 x 16 inches.



Diane Woeffler
Agnes Martin in her Taos Studio, 1955,
Gelatin silver print, edition of 3,
20 x 16 inches.



Shirin Neshat
Tooba Series, 2002,
Cibachrome prints,
61 1/2 x 48 inches each.



Chuck Close
Judy, 1987,
Polaroid photograph,
35 5/8 x 26 1/4 inches.



Robert Mapplethorpe
Self-Portrait, 1980,
Gelatin silver print,
7 1/2 x 7 5/8 inches.



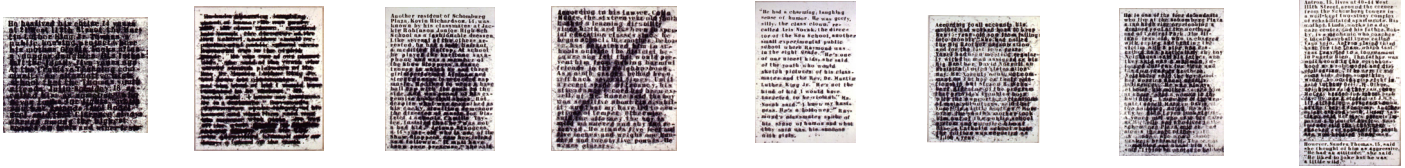
Robert Mapplethorpe
Self-Portrait with a Skullcane, 1988,
Gelatin silver print,
24 x 20 inches.



Donald Baechler
Coney Island, 1988,
Acrylic, oil, fabric collage on linen,
58 1/4 x 40 1/8 inches.

FISHER LANDAU CENTER FOR ART

WE ARE THE WORLD: Figures & Portraits



Glenn Ligon, *Profile Series*, 1990/91, Oil on canvas, 37 5/8 x 22 1/4 inches.



James Brown
Untitled (Head #3), 1985,
Terracotta,
19 x 12 3/4 x 9 1/2 inches.



Richard Artschwager,
Cerise, 2002,
Photographs mounted on wood, acrylic, edition of 1 + 1 AP,
56 x 24 x 28 1/2 inches.



Adam Fuss
Untitled [portrait of Cole Fisher], 2000,
Unique Cibachrome photogram,
45 3/4 x 36 inches.



Robert Mapplethorpe
Portrait of Eric Fisher Schulman, 1984,
Gelatin silver print,
25 1/2 x 25 1/2 inches.



Peter Hujar
(See following page for details)

FISHER LANDAU CENTER FOR ART

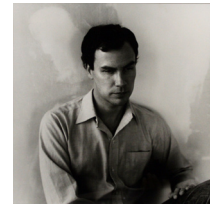
WE ARE THE WORLD: Figures & Portraits



Peter Hujar
Diana Vreeland, 1975,
Vintage silver print,
14 3/4 x 14 3/4 inches.



Peter Hujar
Self-Portrait, 1976,
Vintage silver print,
14 3/4 x 14 3/4 inches.



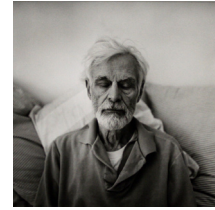
Peter Hujar
*Portrait of Robert Wilson -
Vestry Street (II)*, 1975,
Vintage silver print,
14 3/4 x 14 3/4 inches.



Peter Hujar
Ann Wilson, 1975,
Vintage silver print,
14 3/4 x 14 3/4 inches.



Peter Hujar
Lola Pashalinski, 1975,
Vintage silver print,
14 3/4 x 14 3/4 inches.



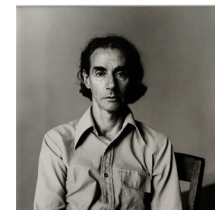
Peter Hujar
Edwin Denby, 1975,
Vintage silver print,
14 3/4 x 14 3/4 inches.



Peter Hujar
David Lighting Up, 1985,
Gelatin silver print,
14 5/8 x 14 5/8 inches.



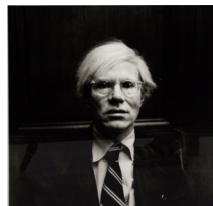
Peter Hujar
Susan Sontag, 1975,
Vintage silver print,
14 3/4 x 14 3/4 inches.



Peter Hujar
James Waring, 1975,
Vintage silver print,
14 3/4 x 14 3/4 inches.



Peter Hujar
May Wilson, 1975,
Vintage silver print,
14 3/4 x 14 3/4 inches.



Peter Hujar
Andy Warhol II, 1975,
Vintage silver print,
14 5/8 x 14 5/8 inches.



Peter Hujar
Divine, 1975,
Vintage silver print,
14 3/4 x 14 3/4 inches.