

# FISHER LANDAU CENTER FOR ART

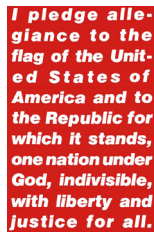
## FIVE DECADES OF PASSION PART TWO: THE FOUNDING OF THE CENTER, 1989 - 1991



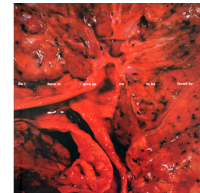
**Ed Ruscha,**  
1984, 1967,  
Graphite and gunpowder on paper,  
14 7/16 x 23 inches.



**Carl Andre**  
*Paraglyph*, 1989,  
Steel plates, Quincy granite, Eastern pine,  
12 x 473 3/4 x 76 1/2 inches.



**Barbara Kruger**  
Untitled (*Pledge*), 1988,  
Photographic silkscreen on vinyl,  
124 x 80 inches.



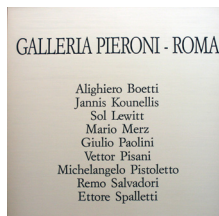
**Barbara Kruger**  
*Heart (Do I have to give up me to be loved by you)*, 1988,  
Photographic silkscreen on vinyl,  
111 3/4 x 111 3/4 inches.



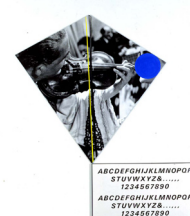
**Sherrie Levine**  
Untitled, 1988,  
Casein on lead,  
40 x 20 inches.



**Sherrie Levine**  
Untitled, 1988,  
Casein on lead,  
40 x 20 inches.



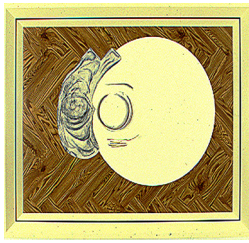
**Simon Linke,**  
*Galleria Pieroni-Roma*, 1988,  
Oil on canvas,  
72 x 72 inches.



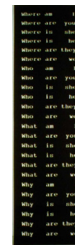
**John Baldessari,**  
*Two Languages (Begin)*, 1989,  
Two gelatin silver prints with vinyl paint, mounted  
on board and plastic, 109 x 115 inches.

# FISHER LANDAU CENTER FOR ART

## FIVE DECADES OF PASSION PART TWO: THE FOUNDING OF THE CENTER, 1989 - 1991



**Richard Artschwager,**  
*White Table*, 1988,  
Acrylic on Celotex,  
70 3/4 x 90 inches.



**Annette Lemieux**  
*Where Am I*, 1988,  
Latex on canvas,  
120 x 34 x 4 inches.



**Daisy Youngblood**  
*Pig*, 1988,  
Ceramic,  
21 x 18 x 20 inches.



**Donald Baechler**  
*Deep North*, 1989,  
Acrylic, oil, fabric collage on linen,  
111 x 144 inches.



**Saint Clair Cemin**  
*Mercury*, 1987,  
Bronze with gray blue patina, edition 1/3,  
25 x 24 x 17 inches.



**Lorna Simpson**  
*Outline*, 1990,  
2 gelatin silver gel prints w/plastic, edition 2/4,  
48 3/4 x 84 inches.



**Joseph Kosuth,**  
*The Square Root of Minus One*, 1988,  
Silkscreen on glass and neon,  
88 x 164 x 15 inches.



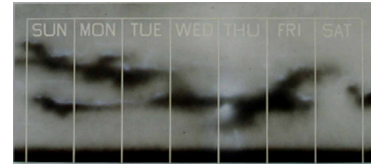
**Charles Arnoldi,**  
*Severed Ties*, 1987,  
Acrylic, modeling paste and sticks,  
95 x 103 x 2 1/2 inches.

# FISHER LANDAU CENTER FOR ART

## FIVE DECADES OF PASSION PART TWO: THE FOUNDING OF THE CENTER, 1989 - 1991



**Neil Jenney**  
*Paint and Painted*, 1970,  
Oil on canvas, with wood frame,  
48 3/4 x 73 1/2 inches.



**Ed Ruscha**  
*Reminder*, 1988,  
Acrylic on canvas,  
40 x 90 inches.



**Katherine Bowling**  
*Red Sky*, 1988,  
Oil on spackle on wood,  
48 X 48 inches.



**Andrew Lord**  
*Jug*, 1988,  
Cast bronze, edition 4/6,  
19 3/4 x 18 x 14 inches.

## LIBRARY



**Donald Baechler**  
*AUTONOMY OR ANARCHY #2*, 2003,  
Acrylic, paper and fabric collage,  
99 x 114 inches.



**Annette Lemieux**  
*Black Mass*, 1991,  
Latex, acrylic medium, gesso, oil on canvas,  
96 x 105 inches.



**Richard Artschwager**  
*Diderot's Last Resort*, 1992,  
Formica on wood,  
54 1/2 x 54 x 43



**Andy Warhol**  
*Merce*, 1974.  
Silkscreen on floral paper, edition number 87/100  
30 x 20 inches.

# FISHER LANDAU CENTER FOR ART

## FIVE DECADES OF PASSION PART TWO: THE FOUNDING OF THE CENTER, 1989 - 1991

### LOBBY



**Philip-Lorca DiCorcia**  
*Head #1*, 2000,  
Fujicolor print on Plexiglass,  
48 x 60 inches.



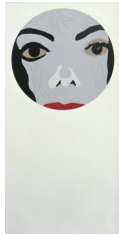
**Francois-Xavier Lalanne**  
*Troupeau de Moutons*, 1977,  
Bronze and concrete,  
35 x 39 x 16 inches (each).



**Daisy Youngblood**  
*Romana*, 1987/88,  
Cast bronze, edition number 1/3,  
21 x 8 1/4 x 10 inches.



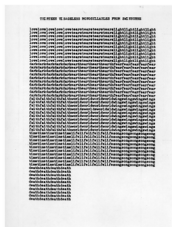
**Frank Gehry**  
*Fish Lamp*, 1985,  
Formica, wire, wood, glass and light,  
68 x 28 x 16 inches.



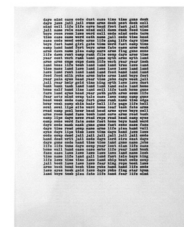
**Gary Hume**  
*Michael*, 2002,  
Screenprint, edition number 5/80,  
62 7/8 x 32 3/4 inches.



**Edward Ruscha**  
*The Act of Letting a Person into Your Home*, 1983,  
Oil on canvas,  
84 x 137 3/4 inches.



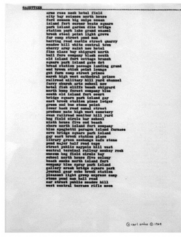
**Carl Andre**  
*Thirteen Visageless Monosyllables from Swinburne*, 1960,  
Typed carbon poems on paper,  
8 1/2 x 11 inches.



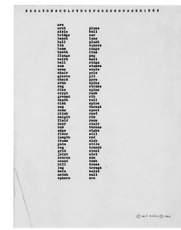
**Carl Andre**  
*days mind case code dust case time guns dock*, 1964,  
Typed carbon poems on paper,  
8 1/2 x 11 inches.

# FISHER LANDAU CENTER FOR ART

## FIVE DECADES OF PASSION PART TWO: THE FOUNDING OF THE CENTER, 1989 - 1991



**Carl Andre**  
*GAZETTEER*, 1964,  
 Typed carbon poems on paper,  
 8 1/2 x 11 inches.



**Carl Andre**  
*ESSAYONSCULPTUREFOREGOOSEN*, 1964,  
 Typed carbon poems on paper,  
 8 1/2 x 11 inches.



**Jon Kessler**  
*City*, 1989,  
 Glass, steel, aluminum, steel mesh, motor,  
 92 x 94 x 70 inches.

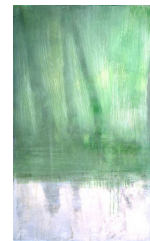
### STAIRWELL



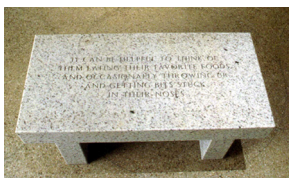
**Marisol**  
*Self-Portrait*, 1970/73,  
 Etching, edition number 12/15,  
 41 1/16 x 27 7/16 inches.



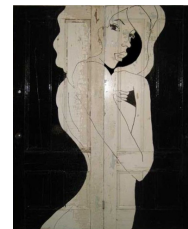
**Jenny Holzer**  
 Untitled, c.1986,  
 Dark gray Misty Granite, edition number 3/3,  
 17 1/4 x 48 x 21 inches.



**Ellen Phelan**  
*River Test - Trees at Water's Edge*, 1989,  
 Oil on linen,  
 50 x 31 1/2 inches.



**Jenny Holzer**  
 Untitled, 1989,  
 Bethel white granite, edition number 1/3,  
 17 x 36 x 18 inches.



**Chris Wylie**  
*Girl on Door 2*, 2009,  
 Oil on found object,  
 86 x 60 x 2 inches.